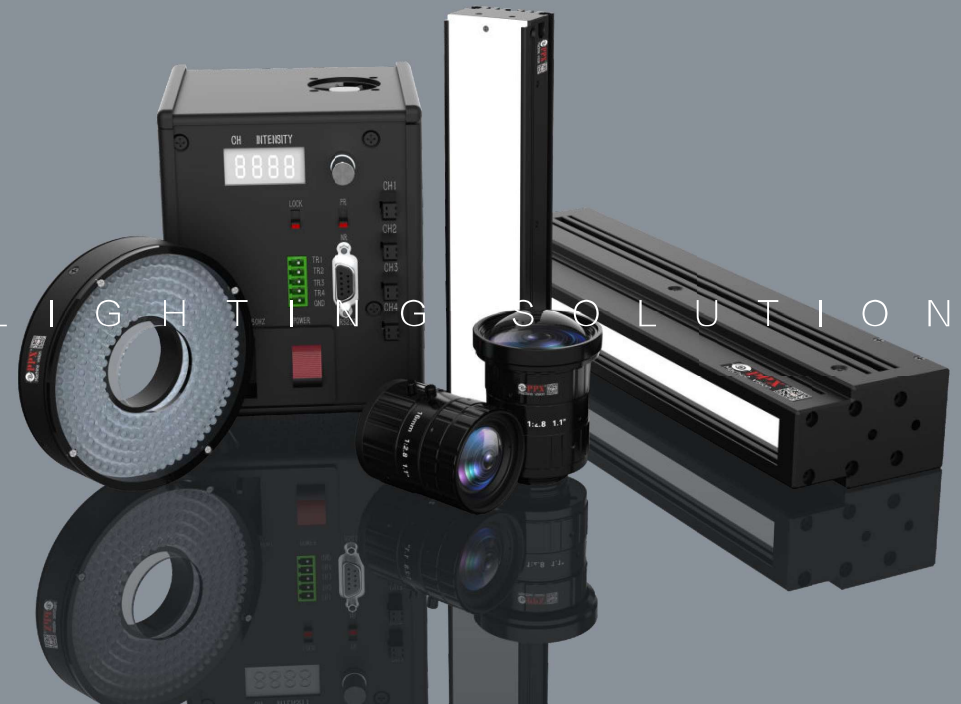


L I G H T I N G · S O L U T I O N

L I G H T I N G · S O L U T I O N



LED LIGHTS FOR MACHINE VISION

2024 Version

# VIA-RI series Ring Light



The picture is for reference only, the actual size can be customized.

## Application

- General appearance inspection
- Object presence detection
- PCB substrate inspection
- Character recognition
- Microscope illumination
- Plastic container inspection

Maximum Size  
300mm

Maximum Brightness  
100,000lux

Maximum Uniformity  
90%

Drive Voltage  
24V

## Features

- Designed with various angles for 360° ring illumination without blind spots, highlighting the three-dimensional information of products.
- High-density LED arrangement offers high brightness and even illumination.
- Optional diffusion plate for softer and more uniform light distribution.
- Power cord adopts a custom-designed cable buckle to improve anti-pulling and anti-swaying performance by more than 10 times.

## ★ Technical Parameters

Standard Light Colors (wavelengths)	White (color temperature): 6000-7500K	Red: 620nm-630nm	Blue: 460nm-470nm
	Green: 515nm-525nm	Infrared: 850nm/940nm	Ultraviolet: 365nm/385nm
Operating Environment	Temperature: -10°C to +60°C		Humidity: 20%-85%, no fogging
Service Life (not guaranteed)	White: 30,000 hours Red: 60,000 hours		
Compatible Controllers	PPX-AC2408-2/4 Analog Controller / PPX-DCP2408-4 Digital Controller / PPX-PCM2408-2 Mini Controller		
Optional Accessories	Standard diffusion plate / Highly-uniform diffusion plate		Extension cables: 3m, 5m, 10m
	Connection ring between light and lens		Polarizing plate

### VIA-RIR series Ring Multi-directional Shadowless Light



### VIA-RIC series Semicircular Light



### VIA-RIF series Ring Shadowless Light



# VIA-TR series Bar Light



The picture is for reference only, the actual size can be customized.

## Application

- Large object surface inspection
- Image scanning
- QR code recognition
- Strip edge defect detection

Maximum Length  
3000mm

Maximum Brightness  
100,000lux

Maximum Uniformity  
95%

Drive Voltage  
24V

## Features

- Wide range of size, and illuminated length ranges from tens of millimeters to thousands of millimeters, making it ideal for large-area lighting application.
- High-density LED arrangement offers high brightness and even illumination.
- Flexible lighting angle, adjustable installation options.
- Power cord adopts a custom-designed cable buckle to improve anti-pulling and anti-swaying performance by more than 10 times.

## ★ Technical Parameters

Standard Light Colors (wavelengths)	White (color temperature): 6000-7500K	Red: 620nm-630nm	Blue: 460nm-470nm
	Green: 515nm-525nm	Infrared: 850nm/940nm	Ultraviolet: 365nm/385nm
Operating Environment	Temperature: -10°C to +60°C		Humidity: 20%-85%, no fogging
Service Life (not guaranteed)	White: 30,000 hours Red: 60,000 hours		
Compatible Controllers	PPX-AC2408-2/4 Analog Controller / PPX-DCP2408-4 Digital Controller / PPX-PCM2408-2 Mini Controller		
Optional Accessories	Standard diffusion plate / Highly-uniform diffusion plate		Polarizing plate
	Extension cables: 3m, 5m, 10m		

### VIA-ZTR series Combined Bar Light



### VIA-GTR series Highly-uniform Bar Light



# VIA-CO series Coaxial Light



The picture is for reference only, the actual size can be customized.

## Application

- Reflective surface inspection
- Presence/absence sorting
- MARK point positioning
- LCD screen positioning detection
- Surface scratch and defect detection

Maximum Length  
1000mm

Maximum Brightness  
80,000lux

Maximum Uniformity  
98%

Drive Voltage  
24V

## Features

- Adopting world-class coated spectroscope for high-quality imaging with no ghosting.
- Equipped with special heat dissipation components for the coaxial light, ensuring heat dissipation efficiency and extending service life.
- High-density LED arrangement offers high brightness and even illumination.
- Power cord adopts a custom-designed cable buckle to improve anti-pulling and anti-swaying performance by more than 10 times.

## ★ Technical Parameters

Standard Light Colors (wavelengths)	White (color temperature): 6000-7500K	Red: 620nm-630nm	Blue: 460nm-470nm
	Green: 515nm-525nm	Infrared: 850nm/940nm	Ultraviolet: 365nm/385nm
Operating Environment	Temperature: -10°C to +60°C		Humidity: 20%-85%, no fogging
Service Life (not guaranteed)	White: 30,000 hours Red: 60,000 hours		
Compatible Controllers	PPX-AC2408-2/4 Analog Controller / PPX-DCP2408-4 Digital Controller / PPX-PCM2408-2 Mini Controller		
Optional Accessories	Standard diffusion plate / Highly-uniform diffusion plate		Extension cables: 3m, 5m, 10m
	Polarizing plate	SMD light-emitting module (high uniformity, low brightness)	

### VIA-GCO series High-brightness Coaxial Light



Selective Color

High-density and high-power LED array emits high-brightness and uniform light, eliminating ghosting and reflection in the captured image.

### VIA-ACO series Angle-rotating Coaxial Light



Selective Color

Perpendicular to the direction of the camera, evenly irradiates diffuse light with high brightness, good uniformity and clear imaging.

### VIA-COP series Coaxial Parallel Light



Selective Color

Adopting a special concentrator lens to achieve the effect of parallel beams, and the parallelism is better than ordinary coaxial lights.

# VIA-BO series Bottom Backlight



The picture is for reference only, the actual size can be customized.

## Application

- Dimensional measurement of hardware and plastic parts
- Screening for presence or absence
- Transparent film stain and damage detection
- LCD screen positioning/measurement

Maximum Length  
1700mm

Maximum Brightness  
200,000lux

Maximum Uniformity  
98%

Drive Voltage  
24V

## Features

- SMD lamp beads are arranged evenly with high density for uniform light emission.
- The bottom is covered with lamp beads to achieve high brightness.
- Adopting imported diffusion plate to ensure the highest illumination uniformity.
- Power cord adopts a custom-designed cable buckle to improve anti-pulling and anti-swaying performance by more than 10 times.

## ★ Technical Parameters

Standard Light Colors (wavelengths)	White (color temperature): 6000-7500K	Red: 620nm-630nm	Blue: 460nm-470nm
	Green: 515nm-525nm	Infrared: 850nm/940nm	Ultraviolet: 365nm/385nm
Operating Environment	Temperature: -10°C to +60°C		Humidity: 20%-85%, no fogging
Service Life (not guaranteed)	White: 30,000 hours Red: 60,000 hours		
Compatible Controllers	PPX-AC2408-2/4 Analog Controller / PPX-DCP2408-4 Digital Controller / PPX-PCM2408-2 Mini Controller		
Optional Accessories	Standard diffusion plate / Highly-uniform diffusion plate		Polarizing plate
	Extension cables: 3m, 5m, 10m		

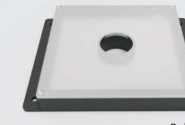
### VIA-PBO series Parallel Backlight



Selective Color

Eliminate the "virtual edge" phenomenon caused by non-parallel light, making the edge contrast of objects in the image higher.

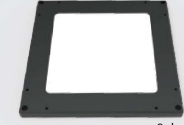
### VIA-ZBO series Middle Hole Backlight



Selective Color

Special light guide plate is used to achieve uniform illumination, which is the first choice for large surface lighting.

### VIA-CBO series Side Backlight



Selective Color

Thinner and more uniform than traditional backlights for easy installation in narrow workplaces.

# VIA-PM series Flat Shadowless Light



The picture is for reference only, the actual size can be customized.

## Application

- Food, tobacco, and daily chemical product packaging inspection
- Electrical appliance housing, parts inspection and measurement
- Detection, measurement, and recognition of characters and graphics on highly reflective and uneven surfaces

Maximum Length  
500mm

Maximum Brightness  
10,000lux

Maximum Uniformity  
95%

Drive Voltage  
24V

## Features

- Scattering light, good uniformity.
- Lightweight, compact, easy to install and space saving.
- Coaxial flat light with shadowless light and coaxial light effect.

## ★ Technical Parameters

Standard Light Colors (wavelengths)	White (color temperature): 6000-7500K	Red: 620nm-630nm	Blue: 460nm-470nm
	Green: 515nm-525nm	Infrared: 850nm/940nm	Ultraviolet: 365nm/385nm
Operating Environment	Temperature: -10°C to +60°C		Humidity: 20%-85%, no fogging
Service Life (not guaranteed)	White: 30,000 hours Red: 60,000 hours		
Compatible Controllers	PPX-AC2408-2/4 Analog Controller / PPX-DCP2408-4 Digital Controller / PPX-PCM2408-2 Mini Controller		
Optional Accessories	Standard diffusion plate / Highly-uniform diffusion plate		Polarizing plate
	Extension cables: 3m, 5m, 10m		

### VIA-GPM series HD Flat Shadowless Light



Selective Color

Unique irradiation structure, light emitted from LEDs is uniformly diffused, while using flexible circuit board to fix at 0 degree irradiation angle.

### VIA-RIH series Square Shadowless Light



Selective Color

Diffused light from 4 directions at a low angle to the measured object can effectively eliminate the reflection caused by smooth surface.

# VIA-TUG series Tunnel Linear Light



The picture is for reference only, the actual size can be customized.

## Application

- Cigarette package surface inspection
- Electronic product housing stain and impurity inspection
- PCB copper foil inspection
- Large-scale surface defect inspection

Maximum Length  
3000mm

Maximum Brightness  
500,000lux

Maximum Uniformity  
98%

Drive Voltage  
24V/48V

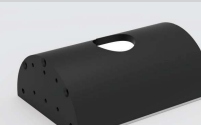
## Features

- Efficient heat dissipation design to guarantee brightness and service life.
- Good diffusion effect, effectively eliminating interference caused by uneven surface.
- Central opening or slot is available to match area array camera and line array camera.
- Power cord adopts a custom-designed cable buckle to improve anti-pulling and anti-swaying performance by more than 10 times.

## ★ Technical Parameters

Standard Light Colors (wavelengths)	White (color temperature): 6000-7500K	Red: 620nm-630nm	Blue: 460nm-470nm
	Green: 515nm-525nm	Infrared: 850nm/940nm	Ultraviolet: 365nm/385nm
Operating Environment	Temperature: -10°C to +60°C		Humidity: 20%-85%, no fogging
Service Life (not guaranteed)	White: 30,000 hours Red: 60,000 hours		
Compatible Controllers	PPX-AC2408-2/4 Analog Controller / PPX-DCP2408-4 Digital Controller / PPX-PCM2408-2 Mini Controller		
Optional Accessories	Standard diffusion plate / Highly-uniform diffusion plate		Polarizing plate
	Extension cables: 3m, 5m, 10m		

### VIA-RDU series Tunnel Light



Adopt high-brightness and high-power LED, special heat dissipation design, high luminous intensity and good uniformity.

# VIA-LS series Line Light



The picture is for reference only, the actual size can be customized.

## Application

- Dedicated light for linear array system
- Large-area product surface inspection
- Dedicated for flying camera system

Maximum Length  
3000mm

Maximum Brightness  
3000,000lux

Maximum Uniformity  
98%

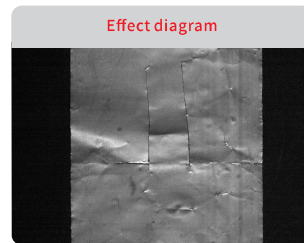
Drive Voltage  
24V/48V

## Features

- Adopting imported high-power LED lamp beads to achieve ultra-high brightness.
- Adopting ultra-dense heat sink and fan to maximize service life.
- Specially designed focusing column to achieve efficient light concentration.

## ★ Technical Parameters

Standard Light Colors (wavelengths)	White (color temperature): 6000-7500K	Red: 620nm-630nm	Blue: 460nm-470nm
	Green: 515nm-525nm	Infrared: 850nm/940nm	Ultraviolet: 365nm/385nm
Operating Environment	Temperature: -10°C to +60°C		Humidity: 20%-85%, no fogging
Service Life (not guaranteed)	White: 30,000 hours Red: 60,000 hours		
Compatible Controllers	PPX-AC2408-2/4 Analog Controller / PPX-DCP2408-4 Digital Controller / PPX-PCM2408-2 Mini Controller		
Optional Accessories	Standard diffusion plate / Highly-uniform diffusion plate		Polarizing plate
	Extension cables: 3m, 5m, 10m		



# VIA-LSC series Line Scan Coaxial Light



The picture is for reference only, the actual size can be customized.

## Application

- PCB substrate detection
- FPC detection
- Wafer detection
- Goldfinger inspection

Maximum Length  
3000mm

Maximum Brightness  
3000,000lux

Maximum Uniformity  
98%

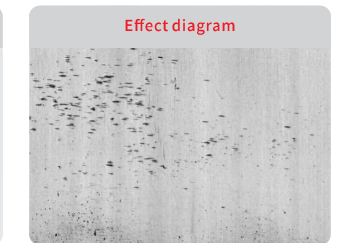
Drive Voltage  
24V/48V

## Features

- Modular design, coaxial module and line light body can be flexibly disassembled.
- One-piece aluminum alloy housing, good heat dissipation.
- Screw grooves on upper and lower sides for flexible installation.
- Power cord adopts a custom-designed cable buckle to improve anti-pulling and anti-swaying performance by more than 10 times.

## ★ Technical Parameters

Standard Light Colors (wavelengths)	White (color temperature): 6000-7500K	Red: 620nm-630nm	Blue: 460nm-470nm
	Green: 515nm-525nm	Infrared: 850nm/940nm	Ultraviolet: 365nm/385nm
Operating Environment	Temperature: -10°C to +60°C		Humidity: 20%-85%, no fogging
Service Life (not guaranteed)	White: 30,000 hours Red: 60,000 hours		
Compatible Controllers	PPX-AC2408-2/4 Analog Controller / PPX-DCP2408-4 Digital Controller / PPX-PCM2408-2 Mini Controller		
Optional Accessories	Standard diffusion plate / Highly-uniform diffusion plate		Polarizing plate
	Extension cables: 3m, 5m, 10m		



# VIA-DP series Spot Light



The picture is for reference only, the actual size can be customized.

## Application

- MARK point positioning
- Screening for presence or absence
- Contour angle positioning
- LCD panel detection
- Backlight use

Maximum Size  
100mm

Maximum Brightness  
20,000lux

Maximum Uniformity  
98%

Drive Voltage  
5V

## Features

- Adopting imported high-power LED lamp beads, high brightness, small size.
- Strong customization ability, customized power and luminous intensity according to customer requirements.
- Efficient heat dissipation design to ensure service life.
- Power cord adopts a custom-designed cable buckle to improve anti-pulling and anti-swaying performance by more than 10 times.

## ★ Technical Parameters

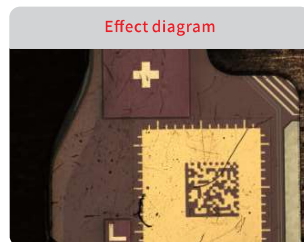
Standard Light Colors (wavelengths)	White (color temperature): 6000-7500K	Red: 620nm-630nm	Blue: 460nm-470nm
	Green: 515nm-525nm	Infrared: 850nm/940nm	Ultraviolet: 365nm/385nm
Operating Environment	Temperature: -10°C to +60°C		Humidity: 20%-85%, no fogging
Service Life (not guaranteed)	White: 30,000 hours Red: 60,000 hours		
Compatible Controllers	PPX-AC0508-4 Analog Controller		
Optional Accessories	Extension cables: 3m, 5m, 10m		



Product image



Lighting diagram



Effect diagram

# VIA-RD series Dome Light



The picture is for reference only, the actual size can be customized.

## Application

- Reflective surface detection
- Concave and convex surface, curved surface, arc surface detection
- Beverage bottle bottom character detection
- Glass piece positioning, surface scratch and defect detection

Maximum Size  
300mm

Maximum Brightness  
500,000lux

Maximum Uniformity  
98%

Drive Voltage  
24V

## Features

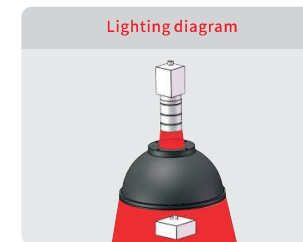
- Special spherical design ensures even light distribution on inspected objects.
- High-density arrangement of LEDs achieves high brightness and uniform illumination.
- Special nano-reflective coating is sprayed inside for uniform and soft light.
- Customizable ultra-bright dome light effectively solves insufficient light intensity issues.
- Used in conjunction with coaxial lights to effectively eliminate shadows in the center of the dome light.

## ★ Technical Parameters

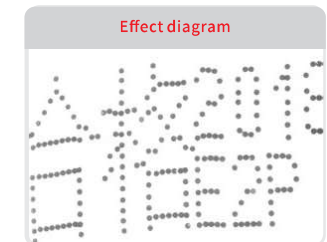
Standard Light Colors (wavelengths)	White (color temperature): 6000-7500K	Red: 620nm-630nm	Blue: 460nm-470nm
	Green: 515nm-525nm	Infrared: 850nm/940nm	Ultraviolet: 365nm/385nm
Operating Environment	Temperature: -10°C to +60°C		Humidity: 20%-85%, no fogging
Service Life (not guaranteed)	White: 30,000 hours Red: 60,000 hours		
Compatible Controllers	PPX-AC2408-2/4 Analog Controller / PPX-DCP2408-4 Digital Controller / PPX-PCM2408-2 Mini Controller		
Optional Accessories	Standard diffusion plate / Highly-uniform diffusion plate		Polarizing plate



Product image



Lighting diagram



Effect diagram

# VIA-IP series Waterproof Light



The picture is for reference only, the actual size can be customized.

## Application

- CNC milling machine positioning
- Greasy and dusty environment
- Phreatic aquifer lighting application
- Outdoor application

Waterproof Level  
IP68

Maximum Brightness  
200,000lux

Maximum Uniformity  
98%

Drive Voltage  
24V

## Features

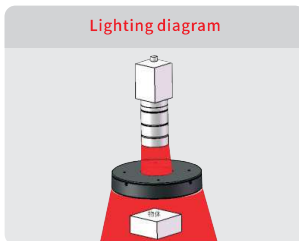
- PPX waterproof light series can reach IP68 waterproof standard.
- Special mechanical structure design to ensure the stability of waterproof lights.
- Wire outlet adopts customized metal waterproof joint, high waterproof performance and tensile resistance.
- Specially enlarged heat sink design ensures good working condition in sealed, dusty and greasy environment.

## ★ Technical Parameters

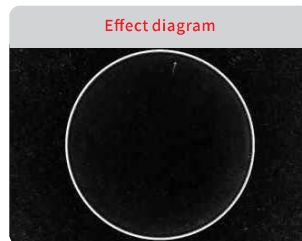
Standard Light Colors (wavelengths)	White (color temperature): 6000-7500K	Red: 620nm-630nm	Blue: 460nm-470nm
	Green: 515nm-525nm	Infrared: 850nm/940nm	Ultraviolet: 365nm/385nm
Operating Environment	Temperature: -10°C to +60°C		Humidity: 20%-85%, no fogging
Service Life (not guaranteed)	White: 30,000 hours Red: 60,000 hours		
Compatible Controllers	PPX-AC2408-2/4 Analog Controller / PPX-DCP2408-4 Digital Controller / PPX-PCM2408-2 Mini Controller		
Optional Accessories	Conventional diffuse reflector / High uniform diffuse reflector		Extension cables: 3m, 5m, 10m
	Connection ring between light and lens		Polarizer



Lighting diagram



Effect diagram



# VIA-AOI series AOI Light



The picture is for reference only, the actual size can be customized.

## Application

- Dedicated to circuit board solder inspection
- Shape defect detection of rotary objects
- Multi-level object detection

Maximum Size  
500mm

Maximum Brightness  
100,000lux

Maximum Uniformity  
98%

Drive Voltage  
24V

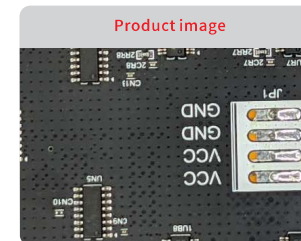
## Features

- Adopts RGB LED with multi-angle design.
- Special diffusion plate to ensure uniformity of light.
- Multi-color and multi-angle illumination accurately reflects surface slope information.
- Special for AOI, mostly used for solder detection.

## ★ Technical Parameters

Standard Light Colors (wavelengths)	White (color temperature): 6000-7500K	Red: 620nm-630nm	Blue: 460nm-470nm
	Green: 515nm-525nm	Infrared: 850nm/940nm	Ultraviolet: 365nm/385nm
Operating Environment	Temperature: -10°C to +60°C		Humidity: 20%-85%, no fogging
Service Life (not guaranteed)	White: 30,000 hours Red: 60,000 hours		
Compatible Controllers	PPX-AC2408-2/4 Analog Controller / PPX-DCP2408-4 Digital Controller / PPX-PCM2408-2 Mini Controller		
Optional Accessories	Conventional diffuse reflector / High uniform diffuse reflector		Extension cables: 3m, 5m, 10m
	Connection ring between light and lens		Polarizer

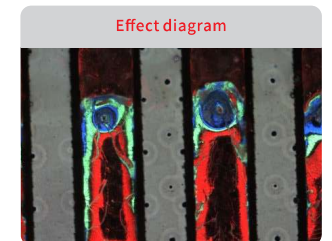
Product image



Lighting diagram



Effect diagram



# VIA-DCP2410-4G series LED Digital Remote Light Controller



## Features

- RS232 communication
- External trigger
- Digital tube accurate display
- Overcurrent protection

Input Voltage  
220V

Trigger Delay Time  
30US

Maximum Single-channel Power 72W

Total Power  
65W/120W/200W

## Features

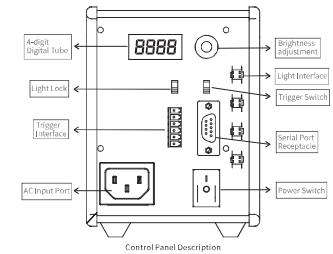
- 255-level brightness adjustment of LED light through software
- Power-off protection: save the original data after power failure
- Manually adjust the light brightness by knob switch
- With light brightness lock function

## ★ Technical Parameters

Model	VIA-DCP2410-4G	VIA-DCP0510-4G
Driving Mode	Constant voltage	
Brightness Adjustment Mode	PWM	
Input Voltage	AC100-240V	
Output Voltage(rated)	24V	5V
Brightness Level	255	
Single Channel Power	70W	5W
Total Power	65W/120W optional	25W
Communication Mode	RS232	
Number of Channels	4 channels	
Manual Adjustment	Knob type	
Overcurrent Protection	Single channel exceeds 3A, protection starts, power on again and brightness returns to zero	
Trigger Mode	Optocoupler trigger, voltage 12-24V	
Trigger Delay Time	30US	
Standby Power Consumption	3W	
Working Environment Temperature	-5°C-60°C	
Dimensions	95mm*95mm*127mm, see the dimension drawing for details	
Weight	0.6kg	
Installation Mode	DIN gauge slot, mounting screw holes, see the dimension drawing for details	

## ★ Control Panel Description

Interface	Description
Brightness Adjustment	Turn clockwise to brighten the light, turn counterclockwise to dim the light
Serial Port Receptacle	Communicate with PC device via RS232
Trigger Switch	Select light steady on/steady off mode
Trigger Interface	Connect an external trigger signal for synchronous strobe operation
AC Input Port	Input AC100-240V 50/60Hz
Power Switch	Turn on/off the controller
Light Interface	Total 4 light outputs, each independent control
Brightness adjustment	0-255 brightness level
4-digit Digital Tube	The first digit from the left is the channel of the current operation, the last three digits are the values corresponding to the current operation
Light Lock	Lock the light adjustment knob to prevent misoperation



## ★ Manual Adjustment Function

Connect the light to CH1-CH4 terminals of the controller, turn the trigger switch on the panel to PR to make the light in steady on mode, and turn on the power supply.

Tap the encoder, select the channel to set, tap again to select the next channel. Turn the encoder clockwise, the brightness increases, turn counterclockwise, the brightness decreases. 255 indicates the highest level, 000 indicates the lowest level.

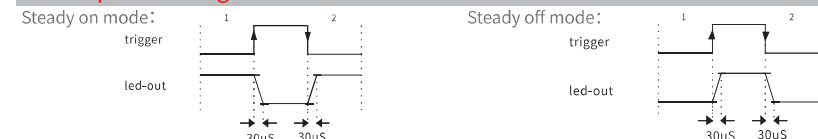
Channel indication and brightness display have memory function, and will not be lost when power failure. Every time the controller is turned on, digital tube display the output of first channel before the controller was turned off last time.

## ★ Trigger Function

The controller has two working modes: "Steady on" and "Steady off". External trigger requires external 12-24V voltage, COM port is the common port for trigger voltage. The controller uses bidirectional optocoupler isolation inside, and trigger voltage does not need to distinguish between positive and negative poles.

Trigger Switch	Working Mode	Description
PR	Steady on	When trigger input port of the corresponding channel has no trigger voltage, the light is steady on When trigger input port of the corresponding channel has a trigger voltage, the light turns off
NR	Steady off	When trigger input port of the corresponding channel has no trigger voltage, the light is steady off When trigger input port of the corresponding channel has a trigger voltage, the light turns on

## ★ Sequence Diagram



### VIA-DCP2410-4-E series Network Interface Digital Controller



External trigger port, RS232 serial interface / RJ45 network interface communication, digital tube accurate display, power-off protection and short-circuit protection functions.

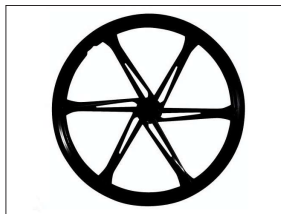
### VIA-DCP2460-2 series High Power Light Controller



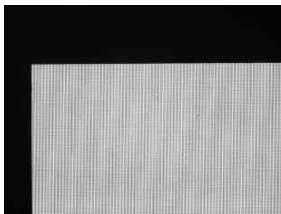
255 levels of brightness adjustment, RS232 communication, digital tube accurate display, save original data after power failure, manual adjustment of light brightness, external trigger port.

# Automobile Manufacturing Industry Application

# Medical Industry Application



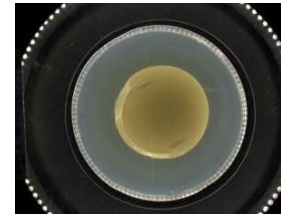
wheel hub inspection  
VIA-BO bottom backlight



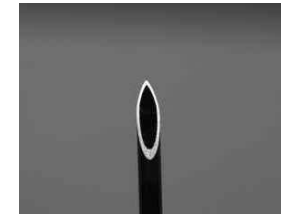
LCD screen detection  
VIA-RI ring light



damping spring detection  
VIA-RI ring light



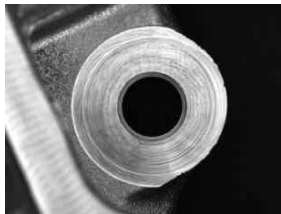
petri dish detection  
VIA-RI ring light



needle detection  
VIA-BO bottom backlight



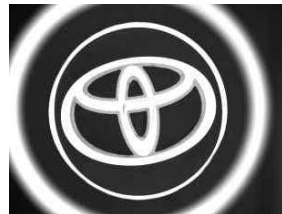
test tube detection  
VIA-TR bar light



engine hood inspection  
VIA-RI ring light



character detection  
VIA-TR bar light



automobile logo detection  
VIA-RD dome light



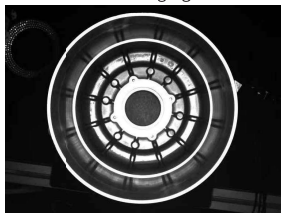
pill box identification  
VIA-ZBO middle hole backlight



label paper detection  
VIA-RIF ring shadowless light



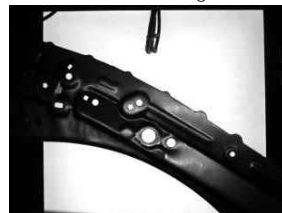
injection bottle inspection  
VIA-TR bar light



automobile motor detection  
VIA-RI ring light



circuit board inspection  
VIA-ZBO middle hole backlight



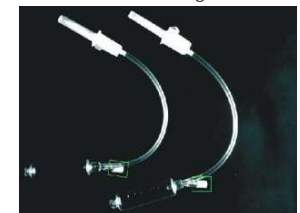
automobile sheet metal inspection  
VIA-BO bottom backlight



injection machine inspection  
VIA-TR bar light



pill detection  
VIA-RI ring light

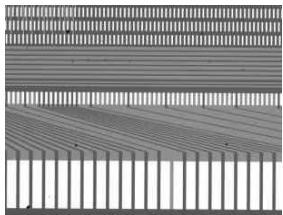


infusion tube identification  
VIA-TR bar light

## 3C Electronic Industry Application



## Food Packaging Industry Application



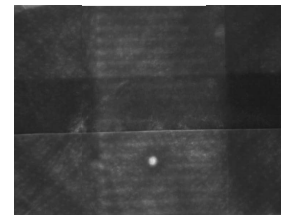
flat screen inspection  
VIA-DP spot light



connector detection  
VIA-RI ring light



PCB board inspection  
VIA-LS line light



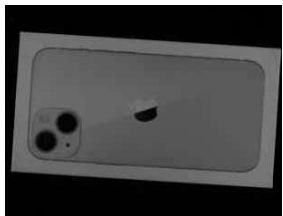
desiccant detection  
VIA-IR infrared light



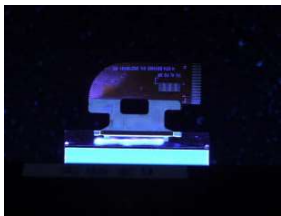
betel nut inspection  
VIA-RI ring light



can lid inspection  
VIA-RI ring light



packaging box inspection  
VIA-TR bar light



LCD screen detection  
VIA-UV ultraviolet light



charging head detection  
VIA-PZRI polarized ring light



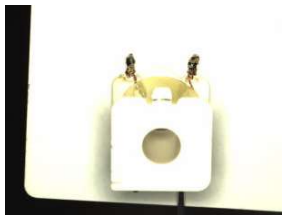
tableware inspection  
VIA-PZRI polarized ring light



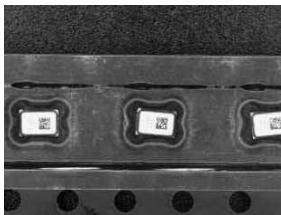
can inspection  
VIA-RD dome light



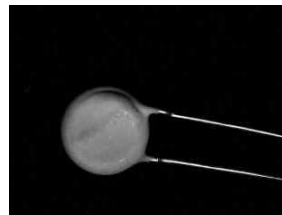
plastic packaging inspection  
VIA-TR bar light



inductance detection  
VIA-CO coaxial light



magnetic core detection  
VIA-RIH square shadowless light



capacitance detection  
VIA-PZRI polarized ring light



tea detection  
VIA-BO bottom backlight



milk carton inspection  
VIA-CO coaxial light



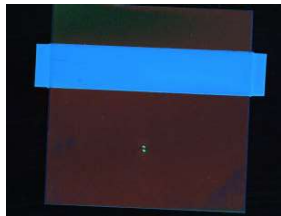
packaging cover inspection  
VIA-RI ring light

# New Energy Industry Application

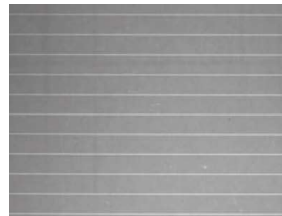
# Household Appliance Industry Application



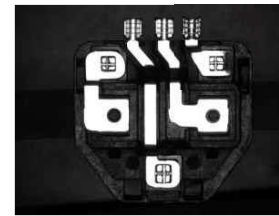
battery detection  
VIA-ZBO middle hole backlight



battery tab detection  
VIA-ZBO middle hole backlight



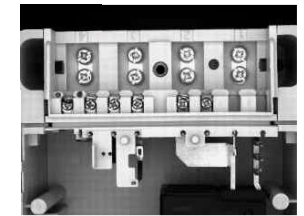
solar panel inspection  
VIA-ZTR combined bar light



plug detection  
VIA-CO coaxial light



bluetooth headset detection  
VIA-RI ring light



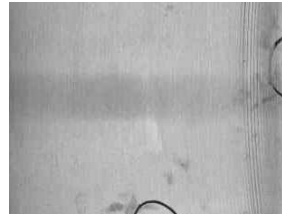
electric meter detection  
VIA-ZTR combined bar light



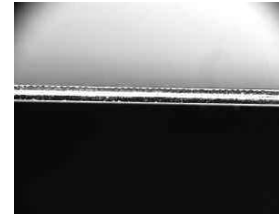
battery QR code detection  
VIA-CO coaxial light



battery cap detection  
VIA-RD dome light



silicon wafer inspection  
VIA-ZBO middle hole backlight



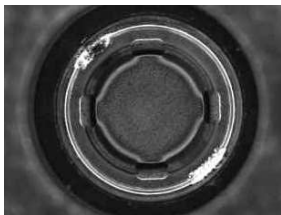
screen detection  
VIA-TR bar light



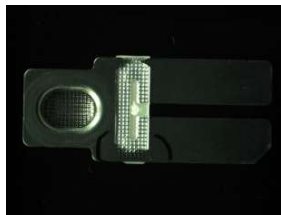
audio detection  
VIA-RI ring light



remote control detection  
VIA-ZBO middle hole backlight



solder joint failure detection  
VIA-RI ring light



pole piece detection  
VIA-CO coaxial light



mobile phone battery detection  
VIA-RIH square shadowless light



sweeping machine inspection  
VIA-RIF ring shadowless light



bluetooth speaker housing inspection  
VIA-RD dome light



speaker detection  
VIA-TR bar light



Manufacturer of Machine Vision Components  
and Provider of Optical Solutions

Lights · Lenses · Cameras · Controllers



**SpecAlvision Ltd.**

Metelinrinne 16, FIN-90420 OULU

+358 50 413 8839, [timo.jauhiainen@specaivision.com](mailto:timo.jauhiainen@specaivision.com)

[www.specaivision.com](http://www.specaivision.com)